


Nuclei Isolation for Single Cell Multiome ATAC + Gene Expression Sequencing

Introduction

This protocol outlines how to isolate, wash, and count nuclei suspensions for use with the Chromium Next GEM Single Cell Multiome ATAC + Gene Expression (GEX) protocol (CG000338). Cryopreserved primary cells (PBMCs) and cell lines (GM12878 cells; 3T3 cells) were used to develop this protocol. PBMCs were cryopreserved in IMDM + 40% FBS + 15% DMSO. Cell lines were cryopreserved in RPMI + 15% FBS + 5% DMSO.

 For optimal assay performance, nuclei isolation should be performed using this protocol and not the standalone protocols for nuclei isolation for ATAC or RNA sequencing only. The recommended buffer compositions, final nuclei suspension concentration, and the wash step guidelines presented in this protocol for nuclei sample preparation are critical for optimal Chromium Single Cell Multiome ATAC + GEX assay performance. Failure to adhere to these guidelines may result in suboptimal assay performance.

DO NOT use this protocol for isolating nuclei from tissue-derived cells. Refer to Demonstrated Protocols- Nuclei Isolation from Embryonic Mouse Brain for Single Cell Multiome ATAC + Gene Expression Sequencing (CG000666) & Nuclei Isolation from Complex Tissues for Single Cell Multiome ATAC + Gene Expression Sequencing (CG000375) for isolating nuclei from tissue-derived cells.

Consult Demonstrated Protocol Cell Preparation Guide (Document CG00053) for Tips & Best Practices.

Additional Guidance

Cells carry potentially hazardous pathogens. Follow material supplier recommendations and local laboratory procedures and regulations for the safe handling, storage and disposal of biological materials.

Cell Sourcing

| Cell Type | Species | Supplier |
|------------------------------------|---------|-------------------|
| GM12878 | Human | Coriell Institute |
| 3T3 | Mouse | ATCC |
| Normal Peripheral Blood MNC (PBMC) | Human | AlloCells |

Optimization Recommendations

The following demonstrated protocol was performed using the indicated sample types. Optimization of some protocol steps may be needed for other cell types.

- **Lysis time:** Perform a lysis timeline to determine appropriate lysis incubation time for a specific cell type. For optimization experiments, RNase inhibitor may be omitted from the buffer and instead of the 10x Genomics' Nuclei Buffer, PBS may be used for nuclei resuspension. However for the actual experiment, ensure that RNase inhibitor and the 1x Nuclei Buffer are used as recommended.
- **Lysis buffer strength:** If nuclei quality is poor at short lysis times, buffer strength can be decreased for a gentler lysis
- **Sample cleanup steps:** Additional cleanup steps such as washes, filtering, density gradient centrifugation, and FACS may be necessary to clean up excess debris present in the sample

See Appendix for additional optimization and troubleshooting guidance.

Preparation – Buffers

| Diluted Nuclei Buffer | Stock | Final | 1 ml |
|---------------------------------------|---------|-------|--------|
| <i>Prepare fresh, maintain at 4°C</i> | | | |
| Nuclei Buffer* (20X) | 20X | 1X | 50 µl |
| DTT | 1000 mM | 1mM | 1 µl |
| RNase Inhibitor | 40X | 1X | 25 µl |
| Nuclease-free Water | - | - | 924 µl |

| Wash Buffer | Stock | Final | 4 ml |
|---------------------------------------|---------|-------|---------|
| <i>Prepare fresh, maintain at 4°C</i> | | | |
| Tris-HCl (pH 7.4) | 1 M | 10 mM | 40 µl |
| NaCl | 5 M | 10 mM | 8 µl |
| MgCl ₂ | 1 M | 3 mM | 12 µl |
| BSA | 10% | 1% | 400 µl |
| Tween-20 | 10% | 0.1% | 40 µl |
| DTT | 1000 mM | 1 mM | 4 µl |
| RNase Inhibitor | 40X | 1X | 100 µl |
| Nuclease-free Water | - | - | 3.40 ml |

| Lysis Buffer | Stock | Final | 2 ml |
|---|---------|-------|---------|
| <i>Prepare fresh, maintain at 4°C</i> | | | |
| Tris-HCl (pH 7.4) | 1 M | 10 mM | 20 µl |
| NaCl | 5 M | 10 mM | 4 µl |
| MgCl ₂ | 1 M | 3 mM | 6 µl |
| Tween-20 | 10% | 0.1% | 20 µl |
| Nonidet P40 Substitute (alternatively, use IGEAL CA-630) If using Sigma 74385 or i8896, prepare a 10% stock | 10% | 0.1% | 20 µl |
| Digitonin (incubate at 65°C to dissolve precipitate before use) | 5% | 0.01% | 4 µl |
| BSA | 10% | 1% | 200 µl |
| DTT | 1000 mM | 1 mM | 2 µl |
| RNase Inhibitor | 40X | 1X | 50 µl |
| Nuclease-free Water | - | - | 1.67 ml |

Additional Buffers

RPML + 10% FBS (maintain at 4°C, pre-warm at 37°C before use)
 PBS + 0.04% BSA (maintain at 4°C)

Specific Reagents & Consumables

| Vendor | Item | Part Number |
|-------------------|---|--------------------------|
| 10x Genomics | Nuclei Buffer* (20X) | 2000153 / 2000207 |
| | RNase Inhibitor 40X | 2001488 (Kit PN-1000887) |
| Thermo Fisher | Digitonin | BN2006 |
| | Tubes, 0.2 ml, flat cap tube** | AB0620 |
| Fisher Scientific | Sorvall Microtube Adapters** | 76003750 |
| Sigma-Aldrich | Trizma Hydrochloride Solution, pH 7.4 | T2194 |
| | Sodium Chloride Solution, 5 M | 59222C |
| | Magnesium Chloride Solution, 1M | M1028 |
| | Nonidet P40 Substitute | 74385 |
| | (alternatively, use IGEAL CA-630) | i8896 |
| | Protector RNase inhibitor (alternative to 10x Genomics product) | 3335402001 |
| | DTT | 646563 |
| Miltenyi Biotec | MACS BSA Stock Solution | 130-091-376 |
| Bel-Art | Flowmi Cell Strainer, 40 µm | H13680-0040 |
| Bio-Rad | Tween 20 | 1662404 |
| Corning | 1X Phosphate-Buffered Saline, pH 7.4 | 21-040-CV |

*Included in the 10x Genomics Single Cell Multiome ATAC Kit A

**ONLY for Low Cell Input Nuclei Isolation protocol

See Appendix for DNase Treatment specific reagents & buffers

Illustrative Overview

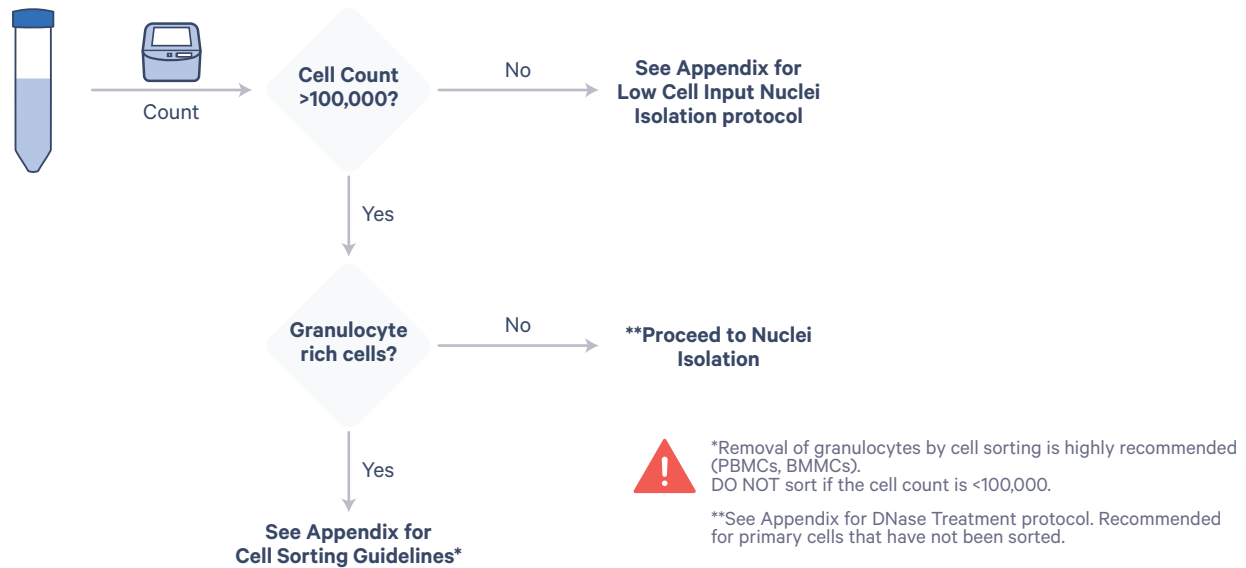
Frozen Cells

Thaw cells using the protocol for thawing cell lines or primary/fragile cells (step 1)

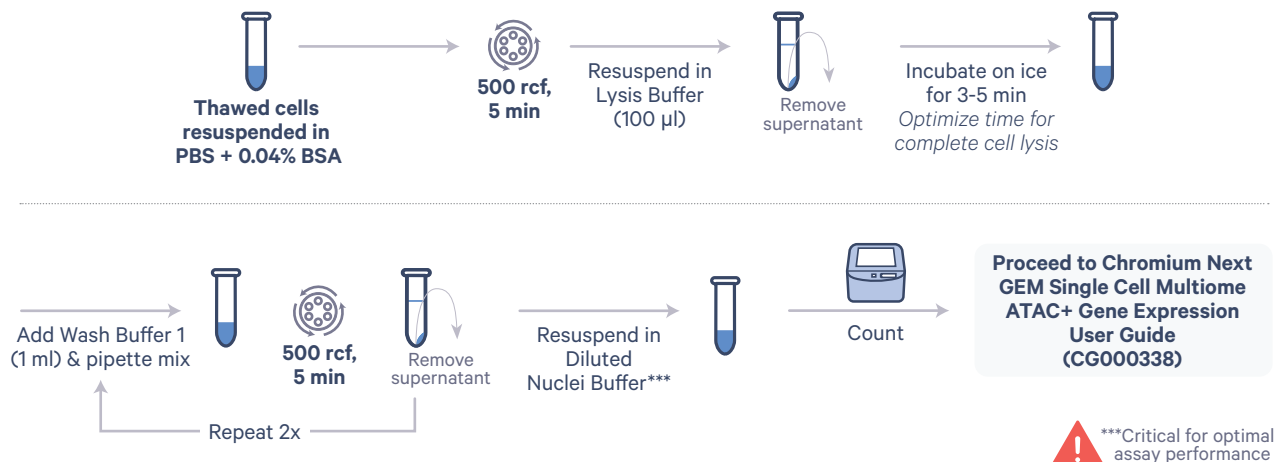
Fresh Cells

Wash cells with PBS + 0.04% BSA, determine cell count, and proceed to Nuclei Isolation (step 2)

1. Thaw Cells



2. Nuclei Isolation



Protocol

If using fresh cells, perform 1-2 washes with PBS + 0.04% BSA, determine cell count, and proceed to Nuclei Isolation (step 2).

1. Thaw Cells (if using frozen cells)

For cell lines (used for GM12878 and 3T3 cells):

- a. Remove cryovials from storage, thaw in the water bath at **37°C** for **1-2 min**. Remove from the water bath when a tiny ice crystal remains.
- b. Pipette mix the cells and transfer to a 15-ml conical tube containing 10 ml pre-warmed media (RPMI + 10% FBS).
- c. Centrifuge at **300 rcf** for **5 min** at **room temp**.
- d. Remove the supernatant without disrupting the cell pellet and resuspend in **1 ml** PBS + 0.04% BSA. Transfer to a 2-ml microcentrifuge tube. Rinse the 15-ml tube with **0.5 ml** PBS + 0.04% BSA and transfer the rinse to the 2-ml tube containing the cells.
- e. Centrifuge cells at **300 rcf** for **5 min** at **room temp**.
- f. Remove the supernatant without disrupting the cell pellet and resuspend in **1 ml** PBS + 0.04% BSA.
- g. Pass cell suspension through a 40 µm Flowmi Cell Strainer.
- h. Determine the cell concentration using a Countess II FL Automated Cell Counter (see Appendix) or a hemocytometer.
- i. Proceed to Nuclei Isolation (step 2). If cell count is <100,000, nuclei may be isolated using the Low Cell Input Nuclei Isolation protocol (see Appendix).

For primary cells/fragile cells (used for PBMCs):

- a. Remove cryovial from storage, thaw in the water bath at **37°C** for **1-2 min**. Remove from the water bath when a tiny ice crystal remains.
- b. Transfer the thawed cells to a 50-ml conical tube. Rinse the cryovial with **1 ml** pre-warmed media (RPMI + 10% FBS) and add the rinse drop-wise to the 50-ml conical tube while gently shaking the tube (300 rpm at 37°C on the thermomixer).
- c. Sequentially dilute cells in the 50-ml conical tube by incremental 1:1 volume additions of

media for a total of **5 times** (including dilution at step b), with **~1 min** wait between additions (see Appendix). Add media (RPMI + 10% FBS) at a speed of **1 ml/3-5 sec** to the tube and swirl.

- d. Centrifuge at **300 rcf** for **5 min** at **room temp**.
- e. Remove most of the supernatant, leaving **~1 ml** and resuspend cell pellet in this volume.
- f. Add an additional **9 ml** media (1 ml/3-5 sec) to achieve a total volume of **~10 ml**.
- g. Centrifuge at **300 rcf** for **5 min** at **room temp**.
- h. Remove the supernatant without disrupting the cell pellet and resuspend in **1 ml** PBS + 0.04% BSA, gently pipette mix **5x**.
- i. Transfer to a 2-ml microcentrifuge tube. Rinse the 50-ml tube with **0.5 ml** PBS + 0.04% BSA and transfer the rinse to the 2-ml tube containing the cells. Mix by gently inverting the tube.
OPTIONAL Primary/fragile cells may have high amounts of ambient/background DNA. Treating the cells with DNase I prior to nuclei isolation can remove the ambient DNA, improving the quality of Single Cell ATAC libraries (see Appendix for protocol). DNase treatment is not necessary if cells are being sorted prior to nuclei isolation.
- j. Centrifuge cells at **300 rcf** for **5 min** at **room temp**.
- k. Remove the supernatant without disrupting the cell pellet and resuspend in **1 ml** PBS + 0.04% BSA.
- l. Pass cell suspension through a 40 µm Flowmi Cell Strainer.
- m. Determine the cell concentration using a Countess II FL Automated Cell Counter (see Appendix) or a hemocytometer.



Cell sorting for granulocyte removal before nuclei isolation is highly recommended for granulocyte-rich samples, such as PBMCs and BMMCs (see Appendix for Cell Sorting Guidelines). Removing RNase-rich granulocytes prevents degradation of mRNA and excludes highly transposed DNA from Neutrophil Extracellular traps (NETs), resulting in cleaner data.

DO NOT sort cells if the cell count is <100,000.

- n. Proceed to Nuclei Isolation (step 2). If cell count is <100,000, nuclei may be isolated using the Low Cell Input Nuclei Isolation protocol (see Appendix).

Protocol

If using fresh cells, perform 1-2 washes with PBS + 0.04% BSA and determine cell count, before proceeding to step 2a. Nuclei may be isolated from 100,000-1,000,000 cells using this protocol.

2. Nuclei Isolation

- Add 100,000-1,000,000 cells to a 2-ml micro-centrifuge tube. Centrifuge at **300 rcf** for **5 min** at **4°C**.
- Remove ALL the supernatant without disrupting the cell pellet.
- Add **100 µl** chilled Lysis Buffer. Pipette mix **10x**.
- Incubate for **3-5 min*** on ice.
*Cryopreserved PBMCs were incubated for 3 min
*Cryopreserved cell lines were incubated for 5 min



Optimize incubation time based on cell type. Sub-optimal or prolonged lysis times can both alter assay performance. Assess lysis efficacy via the Countess II FL Automated Cell Counter/microscopy (see Results).

- Add **1 ml** chilled Wash Buffer to the lysed cells. Pipette mix **5x**.
- Centrifuge at **500 rcf** for **5 min** at **4°C**.
- Remove the supernatant without disrupting the nuclei pellet.
- Repeat steps e-g two more times for a total of 3 washes.
- Based on cell concentration step 2a and assuming ~50% nuclei loss during cell lysis, resuspend in chilled Diluted Nuclei Buffer. See Nuclei Stock Concentration Table and Example Calculation in Appendix. Maintain on ice.

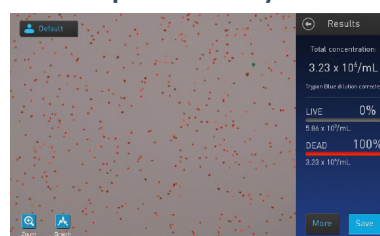


The resuspension in Diluted Nuclei Buffer is critical for optimal Single Cell ATAC assay performance. The composition of the Tris-based Diluted Nuclei Buffer, including Magnesium concentration, has been optimized for the Transposition and Barcoding steps in the Single Cell Multiome ATAC + GEX protocol. Suspension of nuclei in a different buffer may not be compatible.

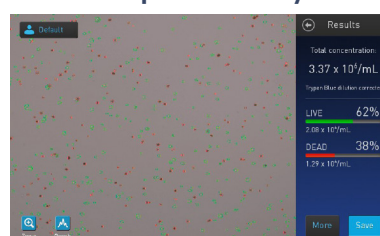
- OPTIONAL If cell debris and large clumps are observed, pass through a cell strainer. For low volume, use a 40 µm Flowmi Cell Strainer to minimize volume loss.
 - Determine the nuclei concentration using a Countess II FL Automated Cell Counter (see Appendix) or a hemocytometer.
- Proceed immediately to Chromium Next GEM Single Cell Multiome ATAC + Gene Expression User Guide (CG000338).

Results

Optimal Cell Lysis



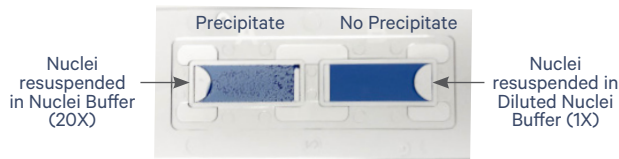
Sub-Optimal Cell Lysis



Troubleshooting

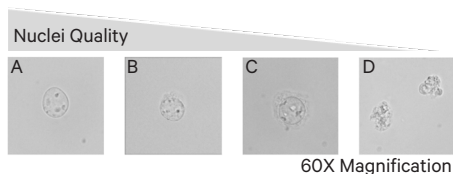
| Problem | Possible Solution |
|--|---|
| High fraction of non-viable cells in input material prior to starting nuclei isolation | <p>Optimize cell thawing to enhance sample quality</p> <p>Reduce fraction of dead cells. Refer to Demonstrated Protocol Removal of Dead Cells from Single Cell Suspensions for Single Cell RNA Sequencing (Document CG000093)</p> <p>Sort cells using flow cytometry</p> <p>Gently handle cell suspensions by following best practices and reduce cell processing times</p> |
| High fraction of viable cells post cell lysis | Incrementally increase the lysis time and monitor lysis efficacy microscopically |
| Difficult to count nuclei/excess debris | Use a fluorescent dye (ethidium-homodimer-1) and fluorescence compatible cell counter or microscope |
| Excessive debris | Sample may be cleaned by extra washes/filtering/density centrifugation/FACS (7-AAD stain) |
| Low nuclei recovery | Use a swing-bucket rotor for centrifugation steps |

Trypan Blue Precipitate in the Countess II Slide



DO NOT use nuclei resuspended in 20X Nuclei Buffer. Repeat nuclei isolation and resuspend in Diluted Nuclei Buffer (1X).

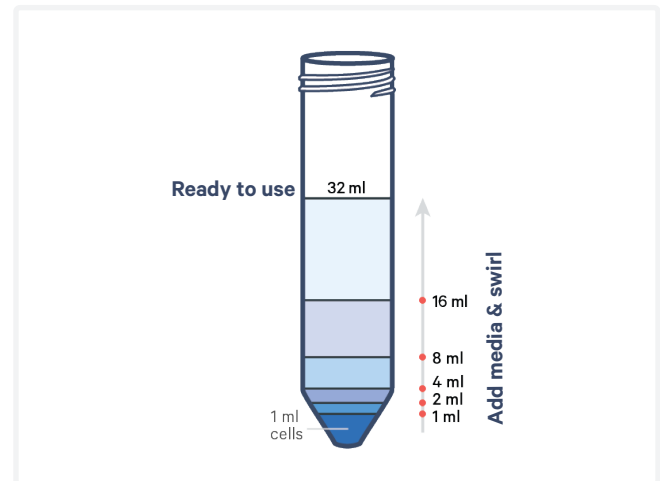
Nuclei Quality - Representative Images (Panel A: recommended quality)



Appendix

Illustrative Overview of Incremental 1:1 Volume Additions

Incrementally add media volumes at the indicated points & swirl



Nuclei Stock Concentration Table

Based on the Targeted Nuclei Recovery, prepare the nuclei suspension in Diluted Nuclei Buffer to achieve the corresponding Nuclei Stock concentrations.

| Targeted Nuclei Recovery | Nuclei Stock Concentration (nuclei/ μ l) |
|--------------------------|--|
| 500 | 160-400 |
| 1,000 | 320-810 |
| 2,000 | 650-1,610 |
| 3,000 | 970-2,420 |
| 4,000 | 1,290-3,230 |
| 5,000 | 1,610-4,030 |
| 6,000 | 1,940-4,840 |
| 7,000 | 2,260-5,650 |
| 8,000 | 2,580-6,450 |
| 9,000 | 2,900-7,260 |
| 10,000 | 3,230-8,060 |

Nuclei Counting and Viability

Countess II FL Automated Cell Counter is recommended for determining nuclei concentrations. The optimal range of cell concentration for Cell Counter is 1,000-10,000 cells/ μ l. Refer to manufacturer's instructions for details on operations.

- Vortex 0.4% trypan blue stain, centrifuge briefly and aliquot **10 μ l** per tube.
- Pipette mix the nuclei suspension. Immediately add **10 μ l** nuclei suspension to 10 μ l aliquot of 0.4% trypan blue stain. Gently pipette mix **10x**.
- Transfer **10 μ l** trypan blue stained nuclei to a Countess II Cell Counting Slide chamber.
- Insert the slide into the Countess II FL Cell Counter, and determine the nuclei concentration and viability. <5% of input cells should be viable. Optimize focusing and light exposure.

Low Cell Input Nuclei Isolation

Nuclei may be isolated from 2,000-100,000 cells using this protocol. If cell count is <40,000, centrifuge cell suspension at 300 rcf for 5 min at 4°C and resuspend the cell pellet in 50 μ l PBS + 0.04% BSA. Transfer 50 μ l cell suspension to a 0.2-ml tube. Proceed directly to step c.

- Centrifuge cell suspension at **300 rcf** for **5 min** at **4°C**. Remove supernatant and resuspend pellet in PBS + 0.04% BSA for 1,000 cells/ μ l cell suspension.
- Add 2,000–40,000 cells to a 0.2-ml tube in a total volume of **50 μ l** PBS + 0.04% BSA.

Approximately 25% of the cell input is expected to be recovered during Chromium Single Cell Multiome ATAC + GEX sequencing. Always determine nuclei counts after nuclei isolation.

| Cell Input | Expected Nuclei Recovery (after cell lysis) | Expected Nuclei Recovery (ATAC + GEX) |
|------------|---|---------------------------------------|
| 40,000 | 16,000 | 10,000 |
| 20,000 | 8,000 | 5,000 |
| 10,000 | 4,000 | 2,500 |
| 4,000 | 1,600 | 1,000 |
| 2,000 | 800 | 500 |

- Centrifuge at **300 rcf** for **5 min** at **4°C**.

- Remove **45 μ l** supernatant without touching the bottom of the tube to avoid dislodging cell pellet.
- Add **45 μ l** chilled Lysis Buffer. Gently pipette mix **3x**.
- Incubate for **3-5 min*** on ice.

*Cryopreserved PBMCs were incubated for 3 min

*Cryopreserved cell lines were incubated for 5 min

Optimize incubation time based on cell type. Sub-optimal or prolonged lysis times can both alter assay performance.

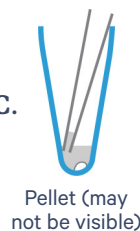
Assess lysis efficacy via the Countess II FL Automated Cell Counter/microscopy. See Results for optimal cell lysis.

- Add **50 μ l** chilled Wash Buffer to the tube. DO NOT mix.
- Centrifuge at **500 rcf** for **5 min** at **4°C**.
- Remove **95 μ l** supernatant without disrupting the nuclei pellet.

- Add **45 μ l** chilled Diluted Nuclei Buffer to the pellet. DO NOT mix.

- Centrifuge at **500 rcf** for **5 min** at **4°C**.

- Remove the supernatant without touching the bottom of the tube to avoid dislodging the nuclei pellet.



The supernatant may be removed in two steps, first with a 100- μ l pipette (set to 40 μ l), followed by removal with a 10- μ l pipette (set to 10 μ l).

- Resuspend the nuclei pellet in **7 μ l** chilled Diluted Nuclei Buffer (pellet may not be visible).



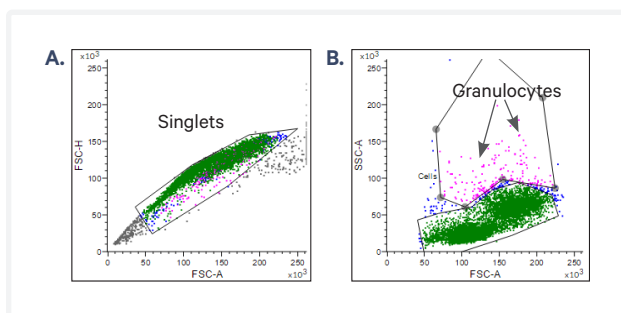
The use of the Diluted Nuclei Buffer for nuclei suspension is critical for optimal assay performance. The composition of the Tris-based Diluted Nuclei Buffer, including Magnesium concentration, has been optimized for the Transposition and Barcoding steps in the Single Cell Multiome ATAC + GEX protocol. Suspension of nuclei in a different buffer may not be compatible with these protocol steps.

- Use **2 μ l** nuclei suspension mixed with **8 μ l** Diluted Nuclei Buffer and **10 μ l** Trypan Blue to determine the cell concentration by a Countess II FL Automated Cell Counter (see Appendix) or a hemocytometer. A final nuclei concentration of 30 nuclei/ μ l is needed for Targeted Nuclei Recovery of 500.

- Proceed immediately to Chromium Next GEM Single Cell Multiome ATAC + Gene Expression User Guide (CG000338).

Cell Sorting Guidelines

- Removal of granulocytes by cell sorting is highly recommended before nuclei isolation from granulocyte-rich samples, such as PBMCs and BMMCs.
- Cell sorting is not recommended if cell count is <100,000.
- After thawing and counting cells (step 1m), cells can be sorted using a 100 μ m nozzle (BD FACSMelody or comparable). No stain is needed for cell sorting. Granulocytes can be identified using side scatter.
- The first collection of sorted cells is for singlets as shown in the representative plot A.
- The second collection of sorted cells separates lymphocytes and monocytes (green cells) from granulocytes (pink cells) as shown in the representative plot B.



- The lymphocytes and monocytes fraction should be collected and used for isolating nuclei.
- Collect the sorted cells in a 5-ml FACS tube containing 500 μ l PBS + 0.04% BSA.
- Centrifuge the collected cells at 300 rcf for 5 min at 4°C.
- Remove the supernatant without disrupting the cell pellet and resuspend in 500 μ l PBS + 0.04% BSA.
- Determine the cell concentration using a Countess II FL Automated Cell Counter (see Appendix) or a hemocytometer.
- Proceed directly to Nuclei Isolation (step 2).

DNase Treatment

Recommended for primary cells prior to nuclei isolation. DNase treatment is not necessary if cells are being sorted prior to nuclei isolation.

Specific Reagents

DNase I, RNase-free (includes 10x Reaction Buffer

with $MgCl_2$) from ThermoFisher Scientific, Part Number-EN0521

Preparation – Buffers

| 10X TBS | Stock | Final | 5 ml |
|---------------------------------------|--------------|----------------|-------------|
| Tris-HCl (pH 7.4) | 1 M | 200 nM | 1 ml |
| NaCl | 5 M | 1.5 M | 1.5 ml |
| Nuclease-free Water | - | 3 mM | 2.5 ml |
| DNase Solution | Stock | Final | 1 ml |
| <i>Prepare fresh, maintain at 4°C</i> | | | |
| TBS | 10X | 1X | 100 μ l |
| 10X Reaction Buffer with $MgCl_2$ | 10X | 1X | 100 μ l |
| DNase I | 1 U/ μ l | 0.1 U/ μ l | 100 μ l |
| Nuclease-free Water | - | - | 700 μ l |

Primary cells/fragile cells may have high amounts of ambient/background DNA. Treating the cells with DNase I prior to nuclei isolation can reduce the ambient DNA, which may improve the quality of libraries.

- Centrifuge the cells in a 2-ml microcentrifuge tube at **300 rcf** for **10 min** at **4°C**.



Using a 2-ml microcentrifuge tube and centrifuging for a longer time (10 min) is critical in maintaining an equal proportion of all cell types.

- Remove supernatant without disrupting the pellet and resuspend the pellet in **300 μ l** DNase Solution.
- Pipette mix **5x** and incubate on ice for **5 min**.
- Add **1 ml** PBS + 0.04% BSA.
- Centrifuge cells at **300 rcf** for **10 min** at **4°C**.
- Remove supernatant without disrupting the pellet and resuspend the pellet in **1 ml** PBS + 0.04% BSA.
- Repeat steps d-e for a total of 2 washes.
- Pass cell suspension through a 40 μ m Flowmi Cell Strainer.
- Determine the nuclei concentration using a Countess II FL Automated Cell Counter (see Appendix) or a hemocytometer.
- Proceed directly to Nuclei Isolation (step 2).

References

1. Chromium Next GEM Single Cell Multiome ATAC + Gene Expression User Guide (CG000338)

Document Revision Summary

| | |
|-------------------------------|---|
| Document Number | CG000365 |
| Title | Nuclei Isolation for Single Cell Multiome ATAC + Gene Expression Sequencing |
| Revision | Rev C to Rev D |
| Revision Date | April 2025 |
| Description of Changes | <ul style="list-style-type: none">• Updated to include 10x Genomics RNase Inhibitor 40X (PN-2001488) on page 2• Updated template along with updates for general minor consistency of language and terms throughout |

© 2025 10x Genomics, Inc. (10x Genomics). All rights reserved. Duplication and/or reproduction of all or any portion of this document without the express written consent of 10x Genomics, is strictly forbidden. Nothing contained herein shall constitute any warranty, express or implied, as to the performance of any products described herein. Any and all warranties applicable to any products are set forth in the applicable terms and conditions of sale accompanying the purchase of such product. 10x Genomics provides no warranty and hereby disclaims any and all warranties as to the use of any third-party products or protocols described herein. The use of products described herein is subject to certain restrictions as set forth in the applicable terms and conditions of sale accompanying the purchase of such product. A non-exhaustive list of 10x Genomics' marks, many of which are registered in the United States and other countries can be viewed at: www.10xgenomics.com/trademarks. 10x Genomics may refer to the products or services offered by other companies by their brand name or company name solely for clarity, and does not claim any rights in those third-party marks or names. 10x Genomics products may be covered by one or more of the patents as indicated at: www.10xgenomics.com/patents. All products and services described herein are intended FOR RESEARCH USE ONLY and NOT FOR USE IN DIAGNOSTIC PROCEDURES.

The use of 10x Genomics products in practicing the methods set forth herein has not been validated by 10x Genomics, and such non-validated use is NOT COVERED BY 10X GENOMICS STANDARD WARRANTY, AND 10X GENOMICS HEREBY DISCLAIMS ANY AND ALL WARRANTIES FOR SUCH USE. Nothing in this document should be construed as altering, waiving or amending in any manner 10x Genomics terms and conditions of sale for the Chromium Controller or the Chromium Single Cell Controller, consumables or software, including without limitation such terms and conditions relating to certain use restrictions, limited license, warranty and limitation of liability, and nothing in this document shall be deemed to be Documentation, as that term is set forth in such terms and conditions of sale. Nothing in this document shall be construed as any representation by 10x Genomics that it currently or will at any time in the future offer or in any way support any application set forth herein.

Contact:

support@10xgenomics.com

10x Genomics, Inc.
6230 Stoneridge Mall Road
Pleasanton, CA 94588 USA

