

Quick Reference Cards | CG000543 | Rev E

Visium CytAssist

for Instrument Operation

For use with:

Visium CytAssist: Includes Accessory & Training Kit, *12-Month Warranty, PN-1000441*

Visium CytAssist: Includes Accessory & Training Kit Kit, *24-Month Warranty, PN-1000442*

Visium CytAssist, *Refurbished, PN-1000432R*



Visium CytAssist

Document Revision Summary



Document Number

CG000543 | Rev E

Title

Visium CytAssist Quick Reference Cards – for Instrument Operation

Revision

Rev D to Rev E

Revision Date

September 2024

Description of Changes

- Updated title page to include new part number for refurbished instrument, reformatted, and removed accessory kit.
- Updated bleach concentration to 10% (p. 8)

Contact:

support@10xgenomics.com

10x Genomics

6230 Stoneridge Mall Road

Pleasanton, CA 94588 USA

© 2024 10x Genomics, Inc. (10x Genomics). All rights reserved. Duplication and/or reproduction of all or any portion of this document without the express written consent of 10x Genomics, is strictly forbidden. Nothing contained herein shall constitute any warranty, express or implied, as to the performance of any products described herein. Any and all warranties applicable to any products are set forth in the applicable terms and conditions of sale accompanying the purchase of such product. 10x Genomics provides no warranty and hereby disclaims any and all warranties as to the use of any third-party products or protocols described herein. The use of products described herein is subject to certain restrictions as set forth in the applicable terms and conditions of sale accompanying the purchase of such product. A non-exhaustive list of 10x Genomics' marks, many of which are registered in the United States and other countries can be viewed at: www.10xgenomics.com/trademarks. 10x Genomics may refer to the products or services offered by other companies by their brand name or company name solely for clarity, and does not claim any rights in those third-party marks or names. 10x Genomics products may be covered by one or more of the patents as indicated at: www.10xgenomics.com/patents. All products and services described herein are intended FOR RESEARCH USE ONLY and NOT FOR USE IN DIAGNOSTIC PROCEDURES.

The use of 10x Genomics products in practicing the methods set forth herein has not been validated by 10x Genomics, and such non-validated use is NOT COVERED BY 10X GENOMICS STANDARD WARRANTY, AND 10X GENOMICS HEREBY DISCLAIMS ANY AND ALL WARRANTIES FOR SUCH USE. Nothing in this document should be construed as altering, waiving or amending in any manner 10x Genomics terms and conditions of sale for the Chromium Controller or the Chromium Single Cell Controller, consumables or software, including without limitation such terms and conditions relating to certain use restrictions, limited license, warranty and limitation of liability, and nothing in this document shall be deemed to be Documentation, as that term is set forth in such terms and conditions of sale. Nothing in this document shall be construed as any representation by 10x Genomics that it currently or will at any time in the future offer or in any way support any application set forth herein.

Visium CytAssist

Step 1: Installation

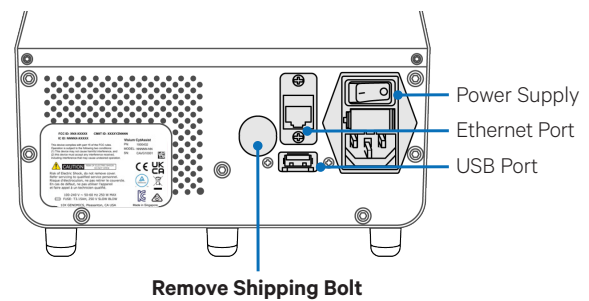
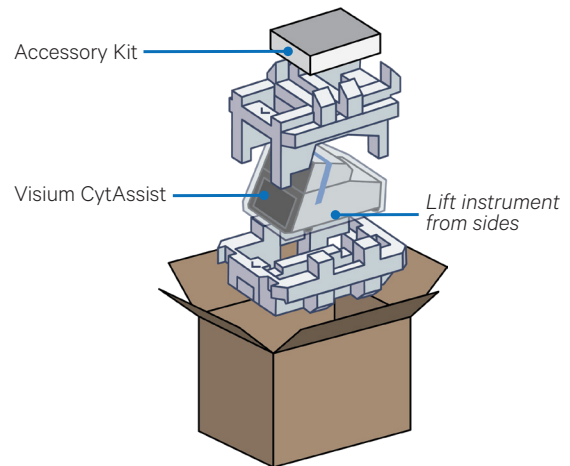
Before unboxing the instrument, choose a location that:

- Is not in direct sunlight.
- Includes a level sturdy laboratory bench that is not subject to movement or vibration.
- Provides maximum bench space (front to back).
- Allows access to the wall plug and to the detachable power cord at the rear.
- Provides a minimum of 4" (10 cm) clearance around unit to allow free air circulation.

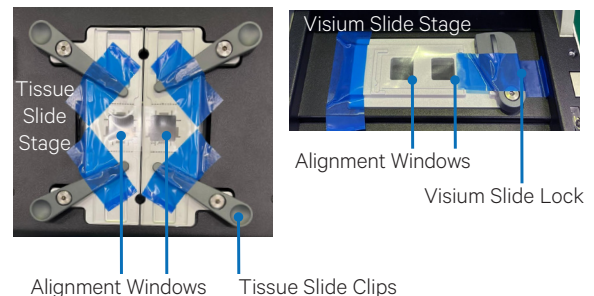
Unbox

- Open box according to box label "this side up."**
Carefully cut or remove the tape on the top of the box and open the top flaps. Ensure that cut is not too deep as it may damage the Instrument Accessory Kit box.
- Remove the Instrument Accessory Kit box, documents, and packaging material.**
- Lift the instrument from the sides. Place on bench top.** Carefully remove all packaging materials/tape from the exterior of the instrument. Retain all packaging materials in the event that the instrument needs to be moved.
- Remove Shipping Bolt from the back of the instrument.** Retain for future use.
- Open the lid.** Carefully remove tape from the four Tissue Slide Clips and the Visium Slide Lock.
- Remove glass protective films from the alignment windows on both stages.** Close lid (clicking sound indicates closure).
- Within Instrument Accessory Kit, locate the universal power cord and plug adaptors.** Attach the correct country adaptor to the universal adaptor.
- Plug the Visium CytAssist into a properly grounded outlet of proper voltage.** If using an Ethernet cable (not provided), connect cable directly to the instrument.

DO NOT POWER ON until ready for **First-Time Use setup**



Remove shipping tape and then glass protective films



DO NOT power on yet.



Ensure power source is reliably grounded

Visium CytAssist

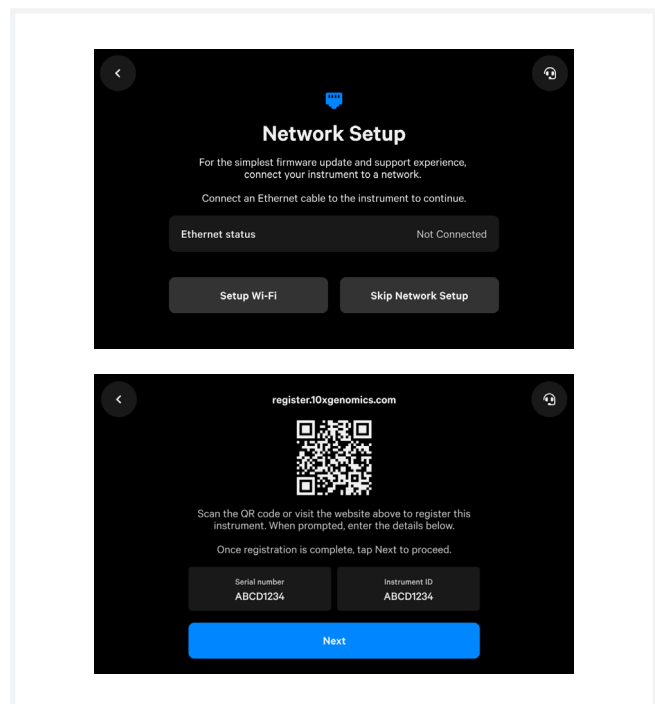
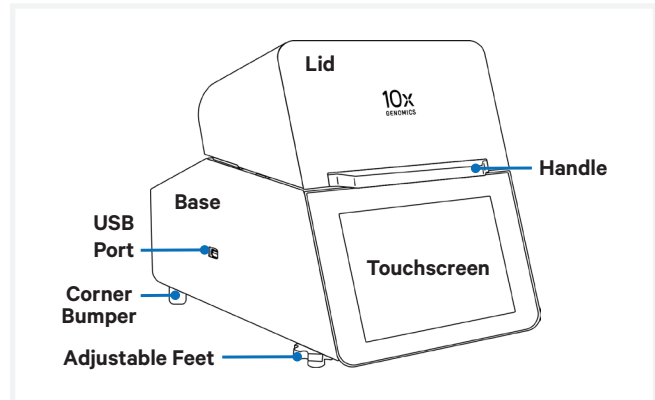
Step 2: First-Time Use

The instrument will walk through a first-time setup protocol. Setup requires the following:

- **10x Genomics Account**
Onscreen instruction will guide account setup. Alternatively, visit cloud.10xgenomics.com/instrument (also accessible by scanning the QR code from the “Register” screen) to create an account beforehand.
- **Instrument serial number and instrument ID**
Located onscreen during setup, and also on the label at the back of the instrument
- **Network settings**
- **A computer with Internet access**
- **Internet connection to the instrument**
Wi-Fi configuration may not be available in your region. At present, only 5 GHz Wi-Fi connections are supported. Ethernet is recommended for optimal performance.

Turn on the System

- a. Power on the instrument using the power switch at the back of the unit.**
If using Ethernet, connect the cable to the instrument Ethernet port.
- b. Follow onscreen instruction for Network Setup (via ethernet or Wi-Fi).**
Refer to the CytAssist Network Connectivity Technical Note (CG000653) for more details.
- c. Set the Date and Time.**
- d. Cloud Registration:** On a networked device, login to your 10x Genomics account at register.10xgenomics.com and register the instrument. Enter the serial number + instrument ID. Read and accept the legal agreement.
- e. Update the firmware.**
After registration, the instrument will automatically search for the latest firmware update. Confirm settings for instrument diagnostics and automatic firmware download.
- f. To level the instrument, turn the adjustable feet at the front of the instrument.**



Turn feet clockwise for decreasing and counterclockwise for increasing height. The feet will come off the instrument if continued to be turned counterclockwise.

Acceptable leveling ranges are $\pm 3^\circ$ from left to right and $\pm 1^\circ$ from front to back.

See *Troubleshooting* section of the *Visium CytAssist Instrument User Guide (CG000542)* if an error occurs during the first-time setup protocol.

Visium CytAssist

Step 3: Readiness Test

The Readiness Test calibrates the imaging parameters and verifies that all systems are working optimally. No reagents are used. Wear gloves.

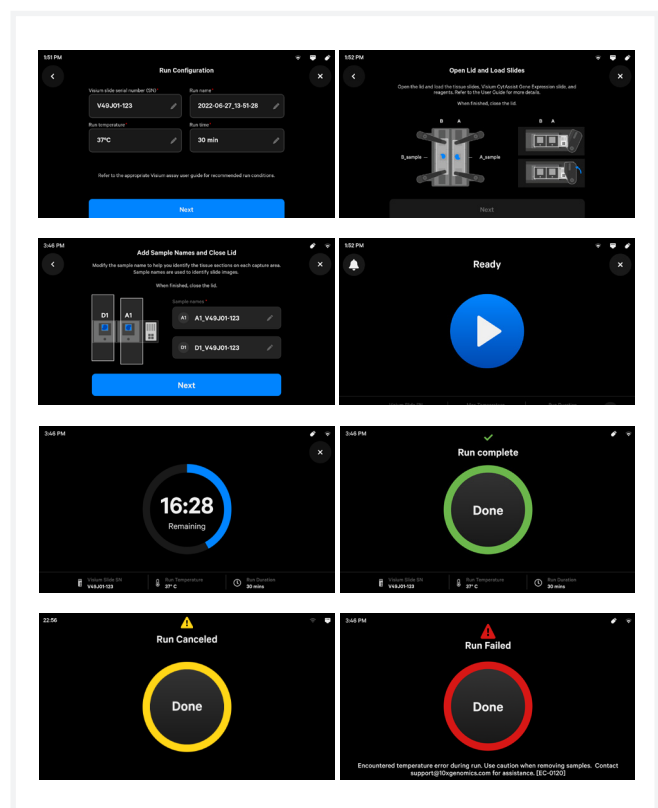
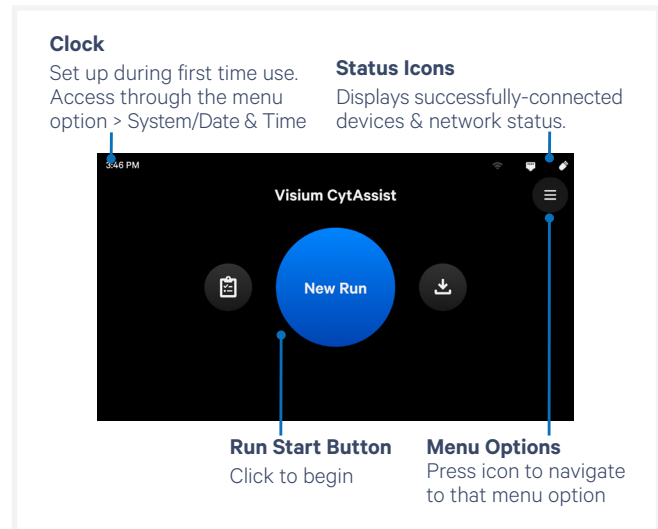
- During first-time setup, follow onscreen instruction to launch the Readiness Test (~40 min).
To initiate a Readiness Test at any other time, navigate through the menu to System > Alternate Modes > Readiness Test.
OR press the blue Run Start Button on the touchscreen to initiate a run. Enter the Readiness Test serial number (located on the Calibration Slide label).
- Locate two blank slides and the Visium CytAssist Calibration Slide in the Instrument Accessory Kit. Ensure slides are clean.
- Enter the serial number on the calibration slide (using a different serial number could result in poor calibration).
- Open Lid.
- Follow onscreen instruction to load slides.
- Press the blue play button to start the test.
- A successful Readiness Test marks the end of setup. Follow onscreen instruction in the event of a failed or incomplete test.
- Upon test completion, follow onscreen instruction to unload slides.
- Store the Calibration Slide away from sunlight and extreme temperature, in the original packaging bag. Retain for future use.
- Wipe down the Tissue Slide Stage and the Visium Slide Stage with laboratory wipes, a mixture of mild detergent and distilled water.
- Close lid. Wipe down the base and lid of the instrument.

For optimal performance, a test is recommended during first-time use, after any update, and after moving the instrument.

The instrument requires a **~20 min cool down** between runs.

Operation Screens

After the Readiness Test, the instrument is ready for use. Representative instrument operation screens are shown below.



Visium CytAssist

Step 4: Main Operation

Main Operation Overview

This section is meant as a general overview of instrument operation and its placement within the steps of the Visium CytAssist-enabled assay. When performing the protocol, follow the steps listed in the appropriate assay kit user guide and use this section only as a reference.

Before proceeding with the appropriate Visium CytAssist-enabled assay:

Select two tissue slides containing sections of interest, and verify that the tissue section is located in an area that results in successful analyte-derived molecule transfer and imaging. Overlay the slides on the diagrams (instructions for 25 mm or 26 mm width) in the Visium CytAssist Quick Reference Cards – for Accessory Kit Instruction (CG000548).

If only one tissue on one slide will be loaded, use a blank slide for the second position on the Tissue Slide Stage.

Follow the protocol in the appropriate assay kit user guide for preliminary steps and preparation prior to using the Visium CytAssist instrument.

- a. Gather two tissue slides, a Visium slide and reagents as listed in the appropriate assay kit user guide.
- b. Enter new run information, including:
 - Visium Slide serial number
Once entered, editing is limited—the first digits (for slide type) cannot be changed. This prevents the instrument from running an incompatible program. To input a different full serial number, exit the screen, return to the home screen, and start over.
 - Custom run name
 - Any change from default temperature and time (37 °C for 30 min)
 - Sample names; the 6.5 mm capture areas are designated **A1** and **D1**. The 11 mm capture areas are designated **A** and **B**.
- c. Open the lid.

- d. Follow onscreen instruction and load the blank slides and Visium Slide onto the instrument. See [Load Slides](#) section for details.
- e. Load reagents to each spacer when instructed in the appropriate assay kit user guide (be mindful of time-sensitive reagents).
- f. Close the lid.
- g. The home screen will now display a play symbol and run information along the bottom of the screen. (Use button in upper right corner of the screen to abort).
- h. Press the play button to start the run.
- i. At the end of a run, the button will display “Done” and a “Run Info” tab at the bottom of the screen.
 - Green: a successfully completed run
 - Red: a failed run/error
 - Yellow: a canceled run
- j. Click the “Done” button and open the lid. DO NOT power off the instrument at this time, as it needs to process Support Data.
- k. **IMMEDIATELY** remove the Visium slide from the instrument, and proceed with the protocol workflow as specified in the appropriate assay kit user guide (save cleanup for later).

During next stopping point in the workflow:

- l. Clean the instrument after every run.
- m. Export the Run Data via USB or Network Shared Folder.
- n. View and verify the tissue samples were accurately aligned within the instrument alignment guides.



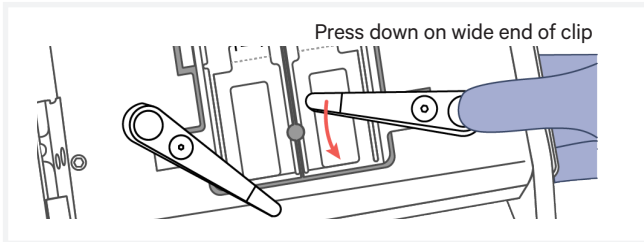
The instrument requires a **~20 min cool down** between runs.

Visium CytAssist

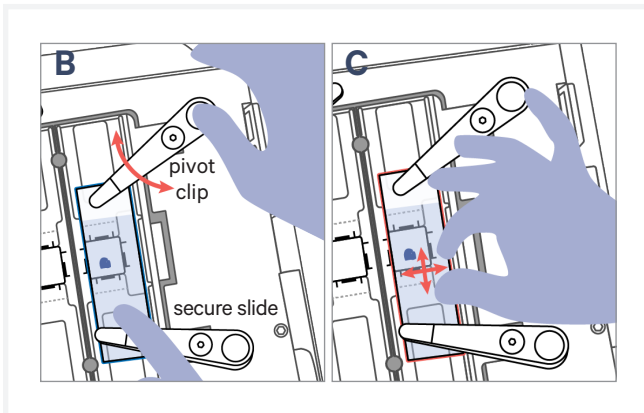
Load Slides onto Slide Stage

Load Tissue Slides onto Tissue Slide Stage

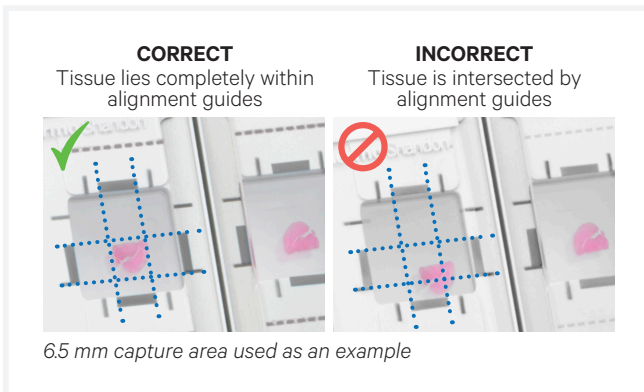
- Press down on the wide end of clip to lift and pivot the narrow end of the clip. Pivot the clips to their outermost position.



- Lay the tissue slide flat against the stage surface. Both hands needed: use one hand to hold the slide in place and the other to pivot the clips and overlap the slide.
- Use fingers to finely adjust the position of the tissue/sample within the alignment guides.



- If only one tissue on one slide will be loaded, use a blank slide for the second position on the Tissue Slide Stage.



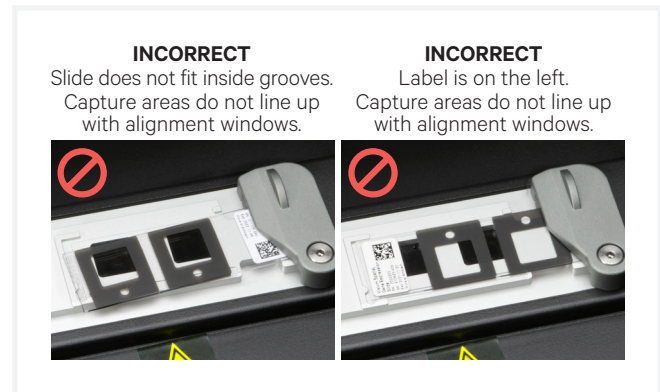
Visium Slides

The Visium Slide Stage holds one of the following at a time:

- Visium Slide, 6.5 mm or 11 mm
- Visium CytAssist Training Slide
- Visium CytAssist Calibration Slide

Load Visium Slide onto Visium Slide Stage

- Inspect the Visium Slide Stage for dust/debris.
- Open the Visium Slide Lock by using one finger to pivot.
- Line up the slide with the label face up and oriented to the right.
- Fit the slide within the raised grooves on the left, top and bottom.
- Hold the slide in place with one hand while slowly closing the Visium Slide Lock. The lock will partially obscure the slide label when correctly secured.



Visium CytAssist Firmware Update Procedure

Step 1: Download and install the update

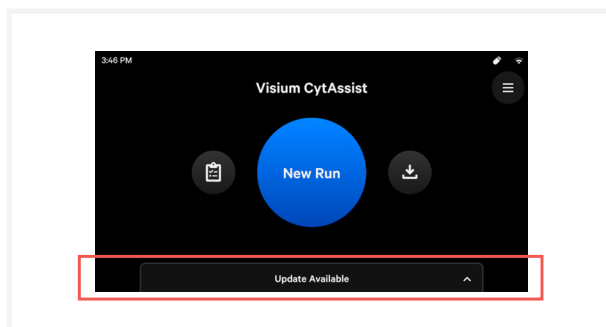
Procedure with an instrument connected to the internet and auto-download enabled (recommended):

Automatic downloads of updates are enabled after firmware updates to ensure the instrument is up-to-date with the latest assay products, features, and bug fixes.

- a. A pop-up on the home screen will alert the user of available updates.
- b. Open pop-up and click to install.

Procedure with an instrument connected to the internet, auto-download disabled:

- a. A pop-up on the home screen will alert the user of available updates.



- b. Open pop-up and click to download.
- c. Click to install.

Step 2: Reinitialize the instrument

After installing an update, run a Readiness Test.

- a. To initiate a Readiness Test, navigate through the menu to System > Alternate Modes > Readiness Test. OR press the blue Run Start Button on the touchscreen.
Enter the serial number located on the Visium CytAssist Calibration Slide label.

- b. Locate two blank slides and the Visium CytAssist Calibration Slide in the Instrument Accessory Kit. Ensure slides are clean.
- c. Follow onscreen instruction to load the blank slides and calibration slide onto the instrument.
- d. Press the blue play button to start the test.
- e. Upon test completion, follow onscreen instruction to unload slides. Follow onscreen instruction in the event of a failed or incomplete test.
- f. Store the slides in their original packaging, away from sunlight and extreme temperature. Retain for future use.
- g. If lab safety guidelines permit, a soft lab towel may be used to clean these areas with a mixture of mild detergent and distilled water. The external instrument surfaces and slide stages can tolerate periodic additional cleaning with a 10% bleach solution followed by a 70% ethanol or 70% isopropanol wash. Follow the relevant lab safety requirements when cleaning the CytAssist instrument. Clean glass windows with dry polyester swabs (such as Texwipe TX714A Cleanroom Swab, 0.5”L - EW-33677-62 from Cole-Parmer or equivalent). Use a bright light (e.g. flashlight) to inspect the glass windows for any smudges and remove them as described above.
- h. Close the lid (clicking sound indicates closure). Wipe down the base and lid of the instrument.
- i. The instrument is now ready for use.

Refer to the *Visium CytAssist Instrument User Guide* (CG000542) for detailed information